

Belt Selection Chart



Cement



Chemical
& Fertilizer



Stone Quarry



Hot Materials



Coal, Iron Ore

Available types and qualities

max. belt width open edges 2000 mm
 max. belt width closed edges 2000 mm
 max. belt width chevron belts 1500 mm
 heat resistant belts up to 225° C
 oil and fat resistant belts
 FRAS (fire resistant, antistatic)
 fire retardant
 cross stabilized belts
 cleated sidewall belts (Elevator belts)
 high abrasion resistant belts
 hot asphalt belts (oil and heat resistant 150° C)
 special belts

Standards

DIN 22 102
 BS (British Standards)
 NF (Norme Francaise)
 RMA (Rubber Manufacturers Association)
 JIS (Japanese Industrial Standards)
 AS (Australian Standards)
 SBS (South African Standards)

CERTIFICATE

QUALITY CONTROL SYSTEM - CONVEYOR BELTS -

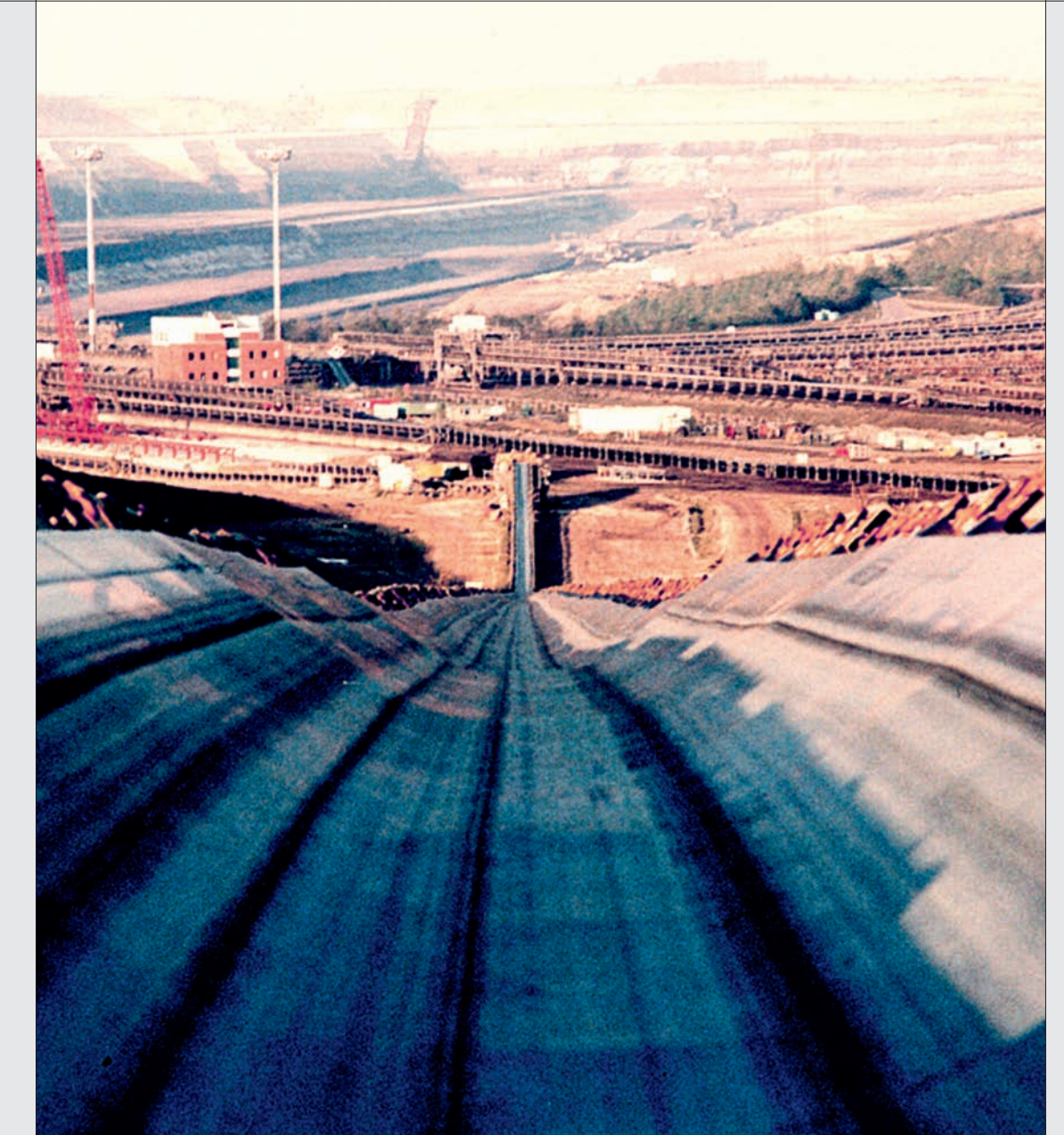
- Retain sample cut from each conveyor belt roll after production and kept at the factory in Germany for the whole time of warranty
- Each Conveyor Belt roll has its own serial no.
- Pictures taken from every Roll of conveyor belt before leaving factory
- Test Certificate / Laboratory Certificate of each roll of conveyor belt after production
- Technical Data Sheet of each belt specification
- Packing certificate of each roll of conveyor belt
- Technical Data Sheet, Test Certificate / Laboratory Certificate as well as Packing Certificate will be part of the official documents

Dipl. Ing. Thomas Ziller
Managing Director

Peter Hartlieb
Sales Director



NILOS® GmbH & CO. KG
 Reisholzstraße 15
 D-40721 Hilden
 Phone: +49-2103-951-0
 Fax: +49-2103-951-209
 Email: info@nilos.de
 Web: www.nilos.com



*Conveyor Belting
 ...there is no better way in belting.*

Belt Selection Chart

Belt type No. of plies	Maximum recommended conveyor tension kN/m	Nominal carcass thickness (mm)	Carcass weight (kg/m ²)	Pulley diameters (mm)*		
				A*	B**	C**
EP 250/2	25	2.4	2.98	250	200	160
EP 315/2	31.5	2.7	3.35	315	250	200
EP 315/3	31.5	3.0	3.72	400	315	250
EP 400/2	40	3.1	3.50	400	315	250
EP 400/3	40	3.2	3.97	315	250	200
EP 400/4	40	4.2	5.21	500	400	315
EP 500/3	50	3.6	4.46	400	315	250
EP 500/4	50	4.4	5.46	400	315	250
EP 500/5	50	5.3	6.57	630	500	400
EP 630/3	63	4.0	4.96	500	400	315
EP 630/4	63	4.9	6.08	630	500	400
EP 630/5	63	5.6	6.94	630	500	400
EP 800/3	80	4.5	5.58	500	400	315
EP 800/4	80	5.5	6.82	630	500	400
EP 800/5	80	6.2	7.69	800	630	500
EP 1000/4	100	6.2	7.69	800	630	500
EP 1000/5	100	7.0	8.68	800	630	500
EP 1000/6	100	7.6	9.42	1000	800	630
EP 1250/4	125	7.2	8.93	800	630	500
EP 1250/5	125	7.9	9.80	1000	800	630
EP 1250/6	125	8.5	10.54	1000	800	630
EP 1400/4	140	8.6	10.66	1000	800	630
EP 1600/5	160	9.1	11.28	1000	800	630
EP 1600/6	160	9.6	11.90	1250	1000	800
EP 1800/5	180	10.9	13.52	1250	1000	800
EP 1800/6	180	12.1	15.00	1400	1250	800
EP 2000/5	200	11.0	13.64	1250	1000	800
EP 2000/6	200	12.1	15.00	1400	1250	800

The ranges and types of Chevron Belts

Cleat Type	Belt Width (mm) a	Cleat Width (mm) b	Cleat Height (mm) c	Cleat Thickness (mm) d	Pitch (mm) e	Profiles
C15-1	600 650 700 750 800	385	15	20	250	
C15-2	900 1000 1050 1200	750	15	20	250	
YC15	600 650 700 750 800 900	575	15	20	338	
C25-1	600 650 700 750 800 900	450	25	25	250	
C25-2	600 650 700 800 900	550	25	25	250	
C25-3	900 1000 1050 1200	750	25	25	330	
C32	800 900 1000 1050 1200	600	32	22	330	

The above charts pertain to belts with polyester/nylon (EP) carcass. Details pertaining to belts with nylon/nylon carcass can be provided on request.

- To determine total belt thickness, add the sum of the cover thickness to the carcass thickness.
- *Pulley diameters apply to belts operating at 60% to 100% of their recommended max. belt tension.
- For lower tensions, smaller diameter pulleys may be used.
- ** The load support of a belt is determined by belt width, tensile strength and bulk material density. The figures given in table relate to 3 roll 30 degree carrying idlers.
- When extremely thick covers are selected, the advise of our Technical Service Departement should be sought.



Splicing Kit for Steel Cord and Fabric Belts

TOPGUM Adhesives

TOPGUM Repair Materials

Pulley Laggings

Belt Rip Detection Systems

Vulcanizing Presses

ROTOCUT RCE/RCM

Tools for the maintenance of conveyor belts

Conveyor Belt Idlers



NILOS® GmbH & Co. KG

Reisholzstraße 15
D-40721 Hilden
Phone: +49-2103-951 -0
Fax: +49-2103-951-209
Email: info@nilos.de
Web: www .nilos.com