



ICE-Trade sro

International Conveyor Equipment & Trading

Mlynarska 3
SK - 902 03 Pezinok
Slovakia

Tel. + 421 948 222 891

info@ice-trade.com

www.ice-trade.com

ICE-Trade Grinding Discs, type CN

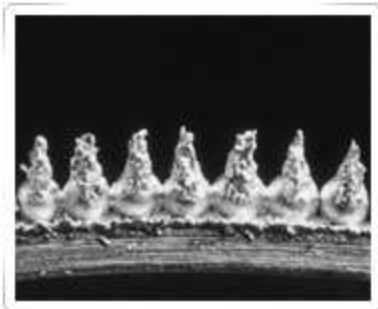
Chrome Nickel bonded Tungsten carbide discs (CN), for buffing most non-ferro materials like rubber, PU and wood.

Other as the CU version grit, which is crushed grit, the CN type grit has two different sorts of grit : SSG ® and MCM ®.

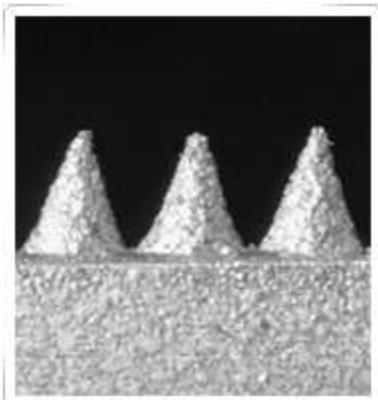
Grit types



Crushed grit, version CU.
Tungsten carbide, copper bonded.



SSG ® grit, version CN.
Tungsten carbide, chrome - nickel bonded.
The "Silver Line"



MCM ® grit.
This is also chrome – nickel bonded Tungsten carbide grit.
The cones are even more precise than the SSG grit !



ICE-Trade sro

International Conveyor Equipment & Trading

Tel. + 421 948 222 891

info@ice-trade.com

www.ice-trade.com

The CN type discs are built with all small Tungsten carbide cones, which gives an overall smooth surface. Therefore, there is less vibration compared with the crushed grit Tungsten discs. Lifetime of CN is approx. 6 x longer than the CU version.

Grit sizes SSG ® grit, version CN, the “Silver Line”

From fine to coarse : 110 – 170 – 200 – 230 – 300 – 330 – 390 – 460 – 550

Unit wheels



Type	Dimensions	Bore
UW76x38	Ø 76 x 38	9,5 / 14
UW102x38	Ø 102 x 38	14

Contour wheels



Type	Dimensions	Bore
CW44x19	Ø 44 x 19	9,5
CW63x27	Ø 63 x 27	9,5
CW76x25	Ø 76 x 25	9,5
CW89x38	Ø 89 x 38	9,5
CW102x38	Ø 102 x 38	12,7 / 19

Flat discs



Type	Dimensions	Bore
FDI100x16	Ø 100 x 16	22
FDI125x28	Ø 125 x 28	22
FDI175x52	Ø 175 x 52	22



Grinding drums



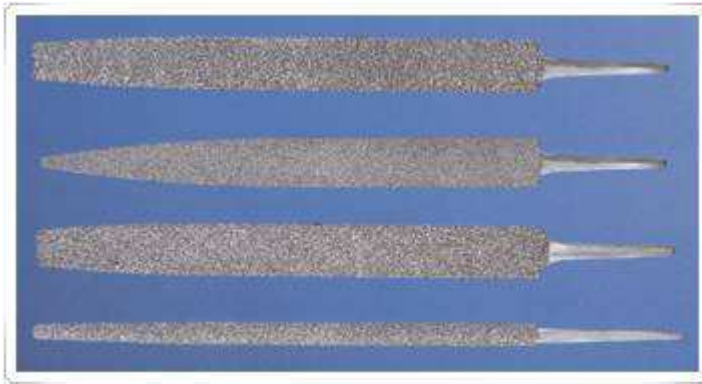
Grinding drums are made according customers specification. Grit size should be specified.

Cutting discs



Type	Dimensions	Bore
CD152	Ø 152	50,8
CD180	Ø 180	32
CD210	Ø 210	50,8

Files



Files are with both with SSG as crushed grit available.
Shapes: flat, half round, round and warding.
Please specify the grit size.

Burrs



The burr shapes :

- Flame
- Dove tail
- Sanding burr
- Birds eye
- Rotor saw
- Cylinder
- Taper
- Ball nose
- Sphere



Overview burrs



ICE-Trade sro

International Conveyor Equipment & Trading

Tel. + 421 948 222 891

info@ice-trade.com

www.ice-trade.com

Rectification wheels (roll grinder)



Roll grinders are made to customers specification. Outer diameter, bore, width and the different grit sizes are needed.

Star wheels



For this moment, we are developing a range of Star wheels.

Soon we will introduce different sizes Star wheels.



MCM grit

Grit sizes MCM® grit

From fine to coarse : 30 – 40 – 50 – 60 – 70 – 90

MCM has a superior stock-removal-rate and will not load on most materials. The ideal grit for materials as Polyurethane, PVC and products which tends to be sticky. A wide variety of tools is available with MCM grit.

Flat discs MCM



Type	Dimensions	Bore
FD101x16	Ø 101 x 16	22
FD127x28	Ø 127 x 28	22
FD178x52	Ø 178 x 52	22

Burrs MCM



Size description	Standard grit size (CU)	SSG grit size (CN)	MCM grit size
Very coarse	14 / 16	550 / 460	90
Coarse	18 / 23	390 / 330	70
Medium	36 / 46	230	50
Fine	60	200 / 170	40
Very fine	80	110	30

Please specify always grit type and size when ordering.

For further information, please contact us.