



ICE-Trade s.a.
International Conveyor Equipment & Trading

Passage de la Poste 3 – 2
B – 7700 Mouscron
Belgium

Tel. + 32.56.48 18 80
Fax + 32.56.48 18 88
info@ice-trade.com
www.ice-trade.com

ICE-Trade ® Cleat Buffing Machine



The ICE-Trade Cleat Buffing Machine, ITCBM, is developed to grind the bases of the cleats. Two types are available : till a base width of 150 mm and till a base width of 240 mm. With both models T, TC, C and block cleats can be buffed. The speed where the cleat is going through the ITCBM is approx. 3 m/min. Against that speed it is impossible to grind a cleat by hand ! Faster the cleat cannot be transported through the ITCBM as this is the optimum speed to achieve a good buffed surface for bonding the cleats.



ICE-Trade s.a.

International Conveyor Equipment & Trading

Tel. + 32.56.48 18 80

Fax + 32.56.48 18 88

info@ice-trade.com

www.ice-trade.com

Technical specs

Type	ITCBM
Length	2 m
Width	0,65 m
Height	1,2 m
Weight	500 kg
Length roller track	3 m
Height roller track	0,9 m
Belt speed	approx. 3 m/min
Noise	< 70 dB (A)
Dust suction (diameter)	100 mm
Tension	415 V
Phases	3+N+E
Amps	16 A
Engine conveyor belts	0,25 kW
Engine grinding axle	3 kW

Operation of the ITCBM is simple and easy.
The average setting time for another type of cleat is approx. 2 minutes.
As soon as the parts are set for the type of cleat, it is just a matter to push the start switch and the cleat is buffed.
A dust suction system, which is supplied along, sucks the rubber dust from below the grinding wheels.



All the top parts are made from stainless steel, as also the machine covers.
The frame, from steel is painted with 2 layers of 2 component epoxy base paint and finished with 2 layers of high quality 2 component acryl paint.



ICE-Trade s.a.

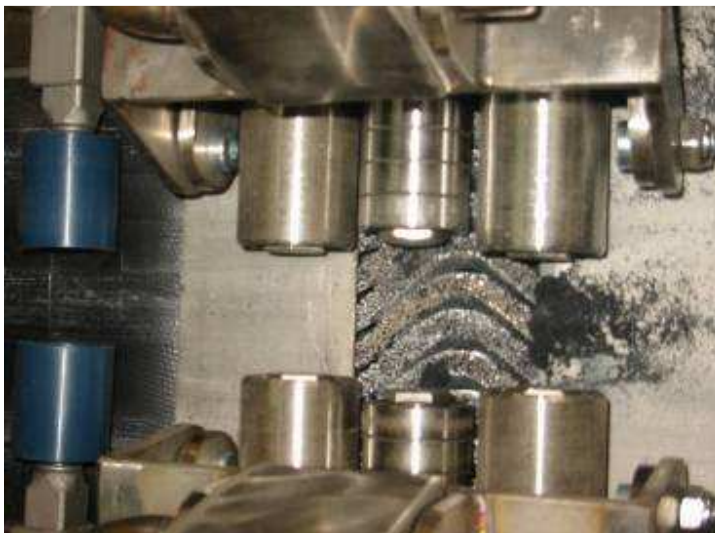
International Conveyor Equipment & Trading

Tel. + 32.56.48 18 80

Fax + 32.56.48 18 88

info@ice-trade.com

www.ice-trade.com



The grinding wheels, Vane Wheels, covered with SSG® tungsten carbide grit ensure a long lifetime.

Further more, because of its shape, and the power of the dust suction system, the temperature remains always low, to guarantee an optimum bonding result.

The ITCBM is maintenance free; all bearings are SKF in 2ZZ quality.
The engine / gearboxes are from Lenze.

The grinding result :



For further information, please contact us.